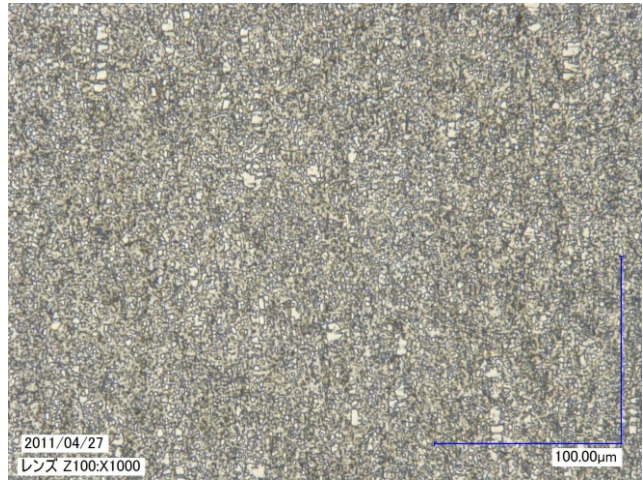


TAKEFU SPECIAL STEEL Cobalt Special

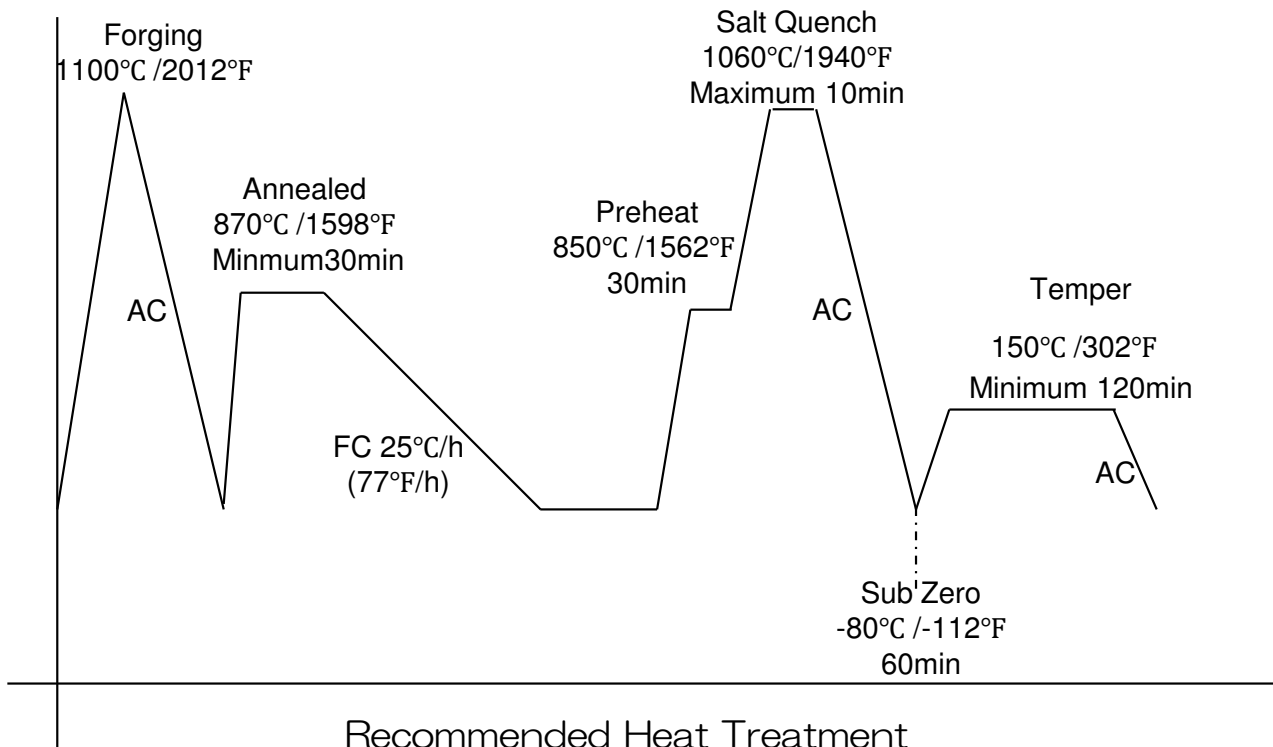
Datasheet

Typical Analysis		Hardening	
Carbon	1.1%	Annealed	HRC25
Chromium	16%	Hardening	HRC61
Tungsten	0.25%	SubZero	HRC61.5
Vanadium	0.3%		
Molybdenum	1.5%		
Cobalt	2.5%		



Thermal Treatments

Forging: Forging at 1100°C/2012°F. Do not forge below 1000°C/1832°F. You should anneal after forging.
 Annealing: Annealing at 870°C (1598°F). Cooling speed not exceeding 25°C/h (77°F/h)
 Quenching: Quenching at 1050°C-1100°C(1922°F-2012°F). Quenching in oil(50°C/122°F) or Air (25°C/77°F)
 Tempering: Tempering at 150°C-250°C(302°F-482°F). If you coat such as TiC, you should tempering at 540°C(1004°F)



NOTE: Results may vary with hardening method and section size.
 Salt or oil quenching will give maximum response.
 Vacuum or atmosphere cooling may result in up to 1-2 HRC points lower.