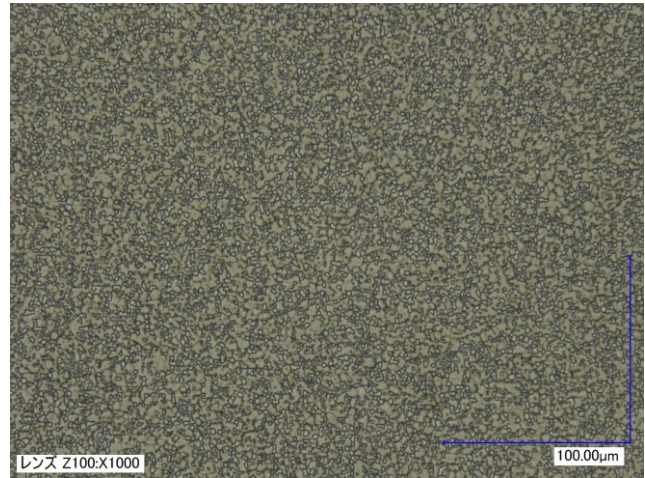


TAKEFU SPECIAL STEEL Super Gold2

Datasheet

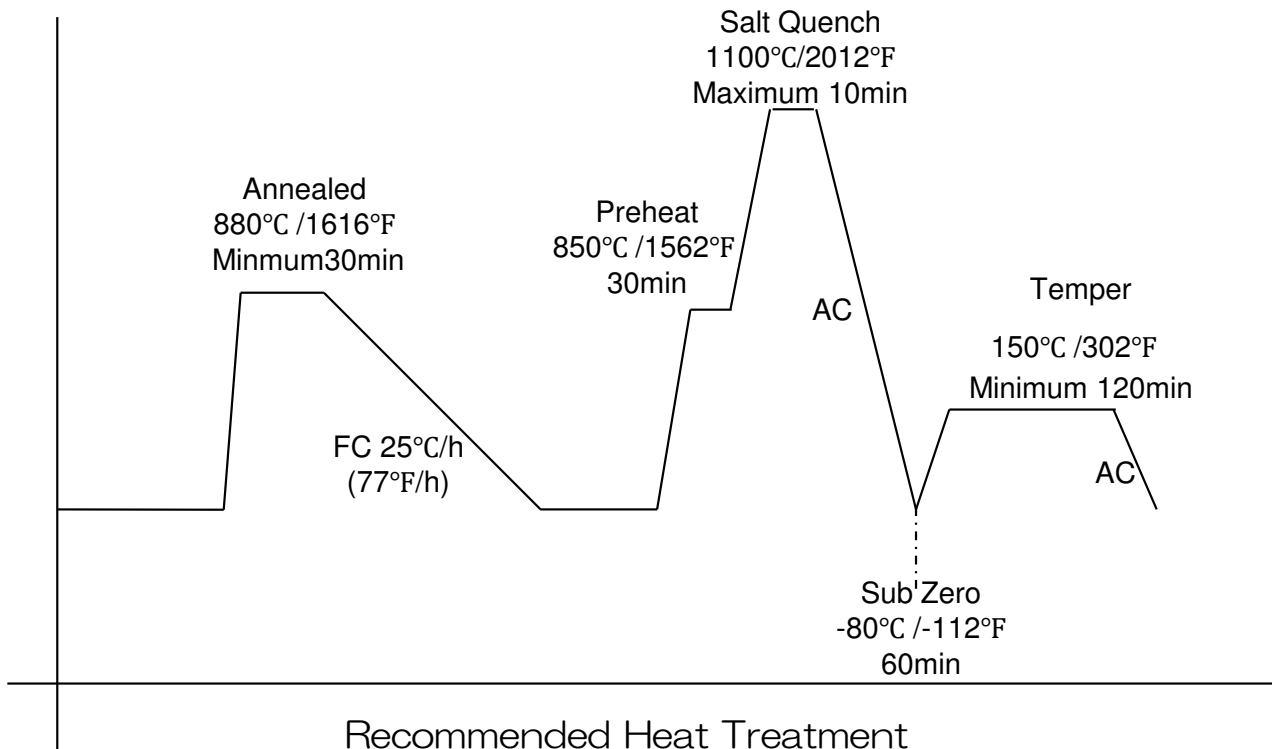
Typical Analysis		Hardening	
Carbon	1.4%	Annealed	HRC30
Chromium	15%	Hardening	HRC62
Vanadium	2.0%	SubZero	HRC62.5
Molybdenum	2.8%		

* Powder metal



Thermal Treatments

Forging: We do not recommend forging because could lead to break.
 Annealing: Annealing at 880°C (1616°F) .Cooling speed not exceeding 25°C/h (77°F/h)
 Quenching: Quenching at 1050°C-1100°C(1922°F-2012°F) Quenching in oil(50°C/122°F) or Air (25°C/77°F)
 Tempering: Tempering at 150°C-250°C(302°F-482°F) . If you coat such as TiC, you should tempering at 550°C(1022°F)



NOTE: Results may vary with hardening method and section size.
 Salt or oil quenching will give maximum response.
 Vacuum or atmosphere cooling may result in up to 1-2 HRC points lower.